



# Mabel King

Paintings from the Estate

Please join us for the opening  
6.30pm Friday 4th May 2012

J A P I N G K A

INDIGENOUS FINE ART GALLERY



Mabel King Wandjina and Unguds 108 x 95 cm Jap 008112

## Mabel King

### Paintings from the Estate

Mabel King (1938- 2006) was one of the Ngarinyin elders whose life encompassed the great fifty year journey that saw the traditional people of the west Kimberley move as a group to ultimately settle at Mowanjum community. Her great knowledge of Ngarinyin stories and custom fed into her life as a painter, which she expressed in bold and naive works that tell the story of her culture. This exhibition represents the Estate paintings of the artist. The exhibition is presented in association with Mowanjum Art and Culture Centre, and will be attended by fellow law custodian Pansy Nulgitt.

Please join us for the opening  
6.30pm Friday 4th May 2012  
Exhibition continues until 6th June 2012

View the exhibition online at [www.japingka.com.au](http://www.japingka.com.au)



Mabel King Wandjina and Emu  
99 x 74 cm Jap 008096



Mabel King Wandjina and Bush Turkey  
128 x 91 cm Jap





Mabel King Wandjina  
66 x 56 cm Jap 008085



Mabel King Wandjinas  
46 x 38 cm Jap 008094



Mabel King Wandjina and Unguds  
61 x 50 cm Jap 008095



Mabel King Wandjinas and Crocodile  
142 x 52 cm Jap 008118



Mabel King Wandjinas  
193 x 130 cm Jap 008103





Mabel King Three Tribes  
152 x 72 cm Jap 008106



Mabel King Wandjina  
51 x 40 cm Jap 008102



Mabel King Wandjinas and Munja Fish  
180 x 72 cm Jap 008119

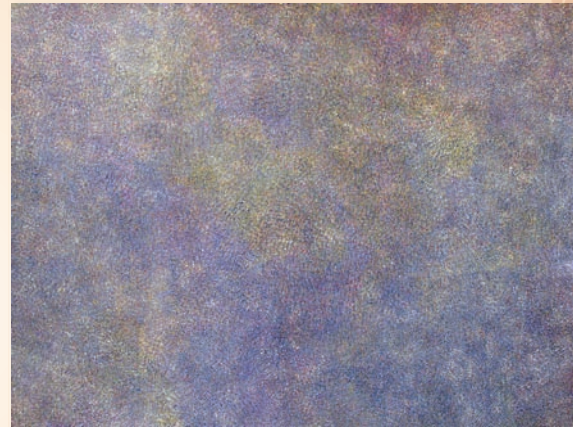


# Sandover River Stories

The Sandover River dissects the Utopia homelands and served as the main walking track for local Aboriginal people trekking to Alice Springs, before the Sandover Highway was constructed.

This exhibition features major artworks from artists from the various outstations in this area including sisters Angelina and Kathleen Ngal, who are Aharlper artists; Father and Daughter Cowboy Loy and Genevieve Kemarr Loy and Elizabeth Kunoth Kngwarray from Iylenty; and Ruby Morton from Rocket Range, known by the local people as Rainbow Country.

Also on exhibition is ***A Parliament of Owls***, sculptures carved and painted by Trudy Raggett Kemarr.



Angelina Ngal Aharlper 180 x 140 cm Jap 007999



Ruby Morton Kngwarray Lanater Seeds at Rocket Range  
198 x 122 cm Jap 008018



Elizabeth Kunoth Kngwarray Awelye  
200 x 120 cm Jap 008007

J A P I N G K A | G A L L E R Y 2

UPSTAIRS JAPINGKA GALLERY

Please join us for the opening 6.30pm Friday 4th May 2012  
Exhibition continues until 6th June 2012

View the exhibition online at [www.japingka.com.au](http://www.japingka.com.au)

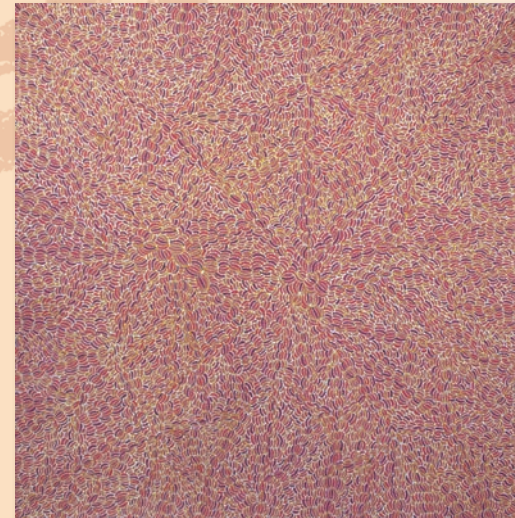




Cowboy Loy Pwerl Untitled  
178 x 137 cm Jap 008004



Ruby Morton Kngwarray Lantana Seeds, Rainbow Country  
179 x 138 cm Jap 008019



Genevieve Kenarr Loy Bush Turkey Story  
122 x 121cm Jap 008010



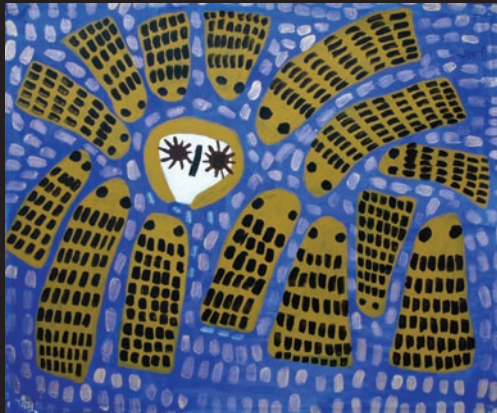
Trudy Ragget Kemarr Arrkerr  
Height 41cm Jap 008025



Trudy Ragget Kemarr Arrkerr  
Height 44cm Jap 008021



Trudy Ragget Kemarr Arrkerr  
Height 35cm Jap 008023



- L | Mabel King Wandjina, Crocodile & Wullamurrunge  
72 x 61 cm Jap 008105
- R | Mabel King Unguds  
95 x 85 cm Jap 008115

J A P I N G K A  
INDIGENOUS FINE ART GALLERY

47 High Street Fremantle West End WA 6160  
Phone: (08) 9335 8265 Email: [japingka@iinet.net.au](mailto:japingka@iinet.net.au)  
Gallery Hours: Mon - Fri 10am - 5.30pm, Sat - Sun 12pm - 5pm  
visit [www.japingka.com.au](http://www.japingka.com.au)



Foundation Member of Indigenous Art Code,  
setting best practice for quality and ethical  
standards nationally.